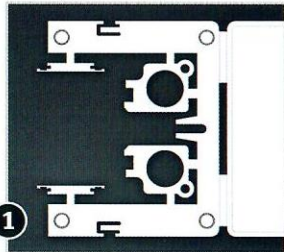
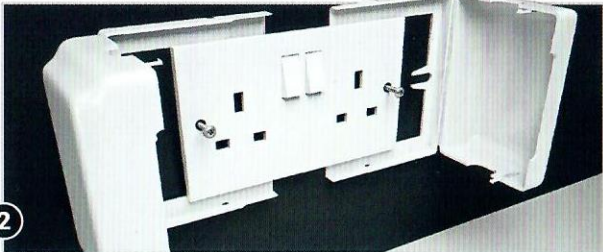


Fitting Instructions



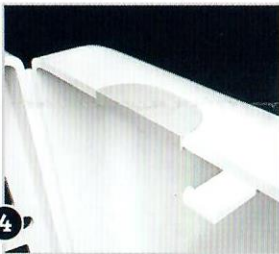
1 Snap off the 2x keys and 2x cable hole covers from the back of the SocketLoc. Add foam pads to the indicated areas on the back surface.



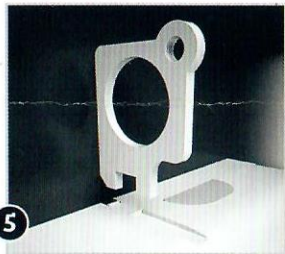
2 Loosen screws on your plug socket by approximately 4mm. Slide the backplate in behind the socket from either the left or right hand side of the socket and ensure the screw locator lug fits around the screw. Ensure that each backplate overlaps each other at the top and the bottom. Before fully tightening the screws push the 2 top covers together without snapping them into place, so that they are almost touching each other, then tighten the screws fully.



3 Close access to the plug socket by securing the cover on the open side, (just push the front cover and it snaps into the closed position).



4 Depending on whether the cables will protrude from the top or bottom insert the spare hole cover cap into the unused cable hole.



5 Use the enclosed security key to open when required. Simply slide the key along the grooved channel to locate the opening for the key to release the cover, then press firmly.



6 Then repeat the process on the bottom, you will need to turn the key upside down for this one.

 **Cardea
Solutions™**

Customer Helpline:
+44 (0161) 413 0766
info@cardea-solutions.com

SocketLoc c/o
Cardea Solutions (UK) Ltd
Unit C4,
Broadoak Business Park
Ashburton Road West
Trafford Park,
Manchester M17 1RW